

# TRAIL PLAN: BALSAM LAKE - GRAHAM 260-35

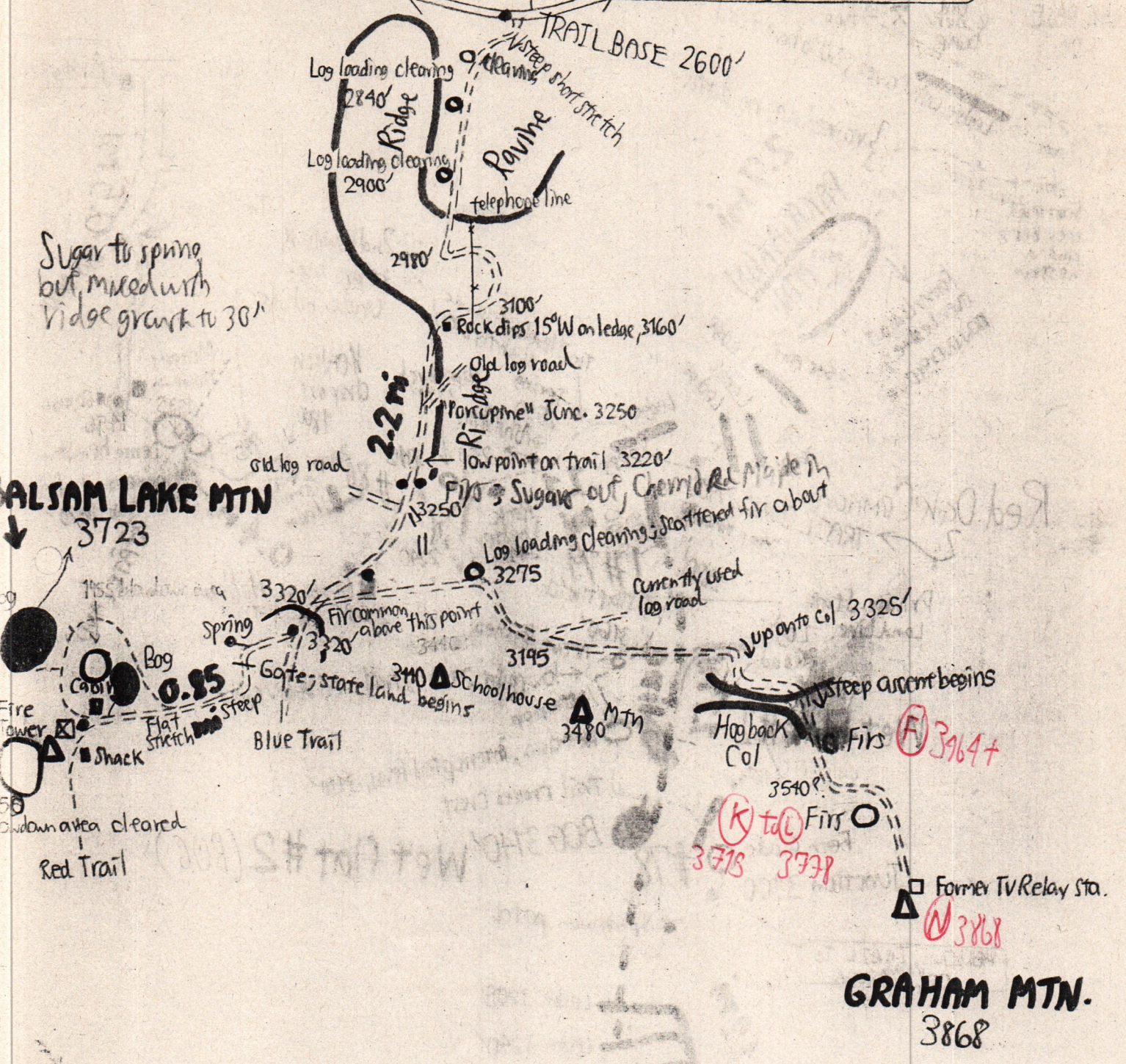
Original in color  
on back of #290-25

Begin pavement 0.9 mi 2250'  
Covered bridge 3.5 mi 1820'  
Peapack Reservoir 9.4 mi 1300'

Dry Brook Ridge  
Blue Trail

2.2 miles to Dry Brook Road

7.9 mi to Route 28, Arkville





# BALSAM LAKE MTN.

5/24/01 | 260-36

Site →	Spring below trail #1310	Spring near JNK blaze #1311	Spring at lean-to site (lean-to gone) #1312	BOG #355, ±3700'		BOG #301-302	Time table
Elev. →	±3100'	±3300'	±3450'	Earns Water Hole	Pit	Pit 301.65 depth ±3680'	Mill Brook Rd 10:00-4:08
Water temperature °F	44°F	46°F (air 65°)	44°F (air 61°)	48°F	47°F (air 62°)	44°F (air 64°)	3100' Spring #1310 10:30
pH low range	—	—	—	4.4	4.2	4.2	3300' Spring #1311
high range	4.9	5.0	4.9	4.0	—	—	Summit 11:30-3:00
Vegetation	FLOW OBVIOUS #1310	FLOW ALMOST IMPERCEPTIBLE #1311	FLOW RAPID FROM PIPE #1312	Profiles over			BOG 301 2:30-4:45
SUG	✓ dom	✓	✓ #1312	FIR	FIR	FIR	BOG 355 ±1:20-12:20
YB	✓	✓	✓	NEMO	NEMO	NEMO	lean-to site 11:40-12:10
MO	✓	✓	✓	SORB (a few)	SORB	SORB	
SUB REPD	✓	✓	✓	FIR REPD	FIR REPD	FIR REPD	
B	✓	✓	✓	OX	OX	OX	
BC	✓	✓	✓	CC	CC	CC	
SAMB	✓	✓	✓	TB	TB	TB	
MM	✓	✓	✓	CX	CX	CX	
RTRSTE	✓	✓	✓	SPHAGNUM	SPHAGNUM	SPHAGNUM	
TIAR	✓	✓	✓	CINN	CINN	CINN	
HYDRO	✓	✓	✓				
LAP	✓	✓	✓				
DICENTRA	✓	✓	✓				
CAULO	✓	✓	✓				
VC	✓	✓	✓				
VPAP	✓	✓	✓				
GAL	✓	✓	✓				
RAGORT	✓	✓	✓				
AA	✓	✓	✓				
RS	✓	✓	✓				
DENT	✓	✓	✓				
CHELOWE	✓	✓	✓				
CINNA	✓	✓	✓				
ALLIUM	✓	✓	✓				
ERY	✓	✓	✓				
TE	✓	✓	✓				
VV	✓	✓	✓				
CHRYSOSPHEMUM	—	—	—				
DP	✓	✓	✓				
SCAMPYL	✓	✓	✓				
RANUNC RECURV?	—	—	—				
RHISPIDUS	—	—	—				
IMP	—	—	—				
HERACLEUM	—	—	—				
CLAYT	—	—	—				
THALICTRUM	—	—	—				

The SUB-VV flat S of trail at ±3500' had NO standing or flowing surface water + was not tested.

Recoiled

PREN POLEMONIUM COMPOUND-LVD. CRULLIFER WITH SMALL WHITE FLS.

lean-to site 11:40-12:10